



Accident Analysis Report

1. Client Information

Organisation Name: xxx
Requested by: xxx
Date requested: 29 August 2012
Date of incident: 28 August 2012
Time of incident: 13:37PM
Type of incident: Accident

2. Vehicle Details

Registration Number: xxx
Vehicle Description: xxx

3. Analysis

Tacho Data

Tacho data is second-by-second data which will include Speed and RPM in a graphical format. Tacho data is based on Speed, RPM or any other analogue or digital devices, connected to inputs 1 – 4 on the **FM 3316 Communicator**. The unit stores 80% trip data and 20% tacho data, thus it is important to request a tacho download within 24 hours of the incident as the 20% tacho data gets overwritten. There is no tacho data recording on any other MiX Telematics unit.

Below are behaviors that we look at when compiling a tacho report, with the understanding that MiX Telematics can only report on these inputs if they are connected prior to the accident on the vehicle.

- Speed behavior, the maximum speed and the manner the speed increased (harsh acceleration) and/or decreased (harsh braking).
- RPM behavior, if out of green band driving occurred and if over revving occurred.
- Brakes behavior, how the brakes were utilized and the period that brakes were applied during the time of the incident.

Activity Timeline

The Activity timeline displays trip and event information for a driver and / or vehicle graphically in the form of a timeline. The timeline can display up to 24 hours (a full day) of information and can be zoomed in to display various time periods down to 1 hour.

Figure 1 - Activity Timeline

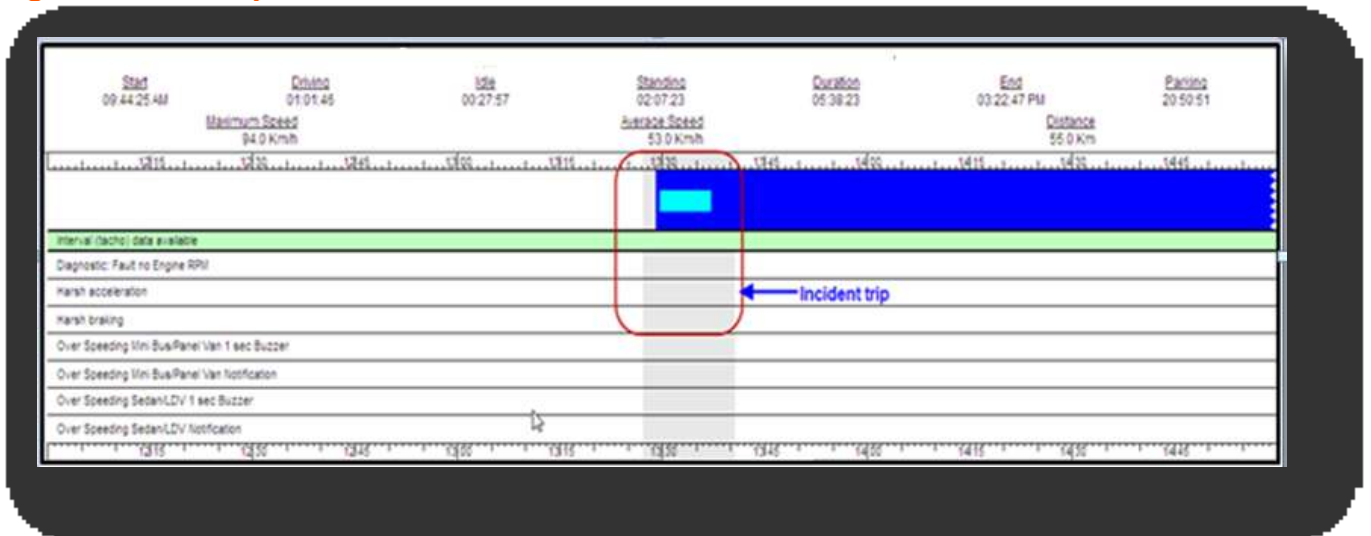
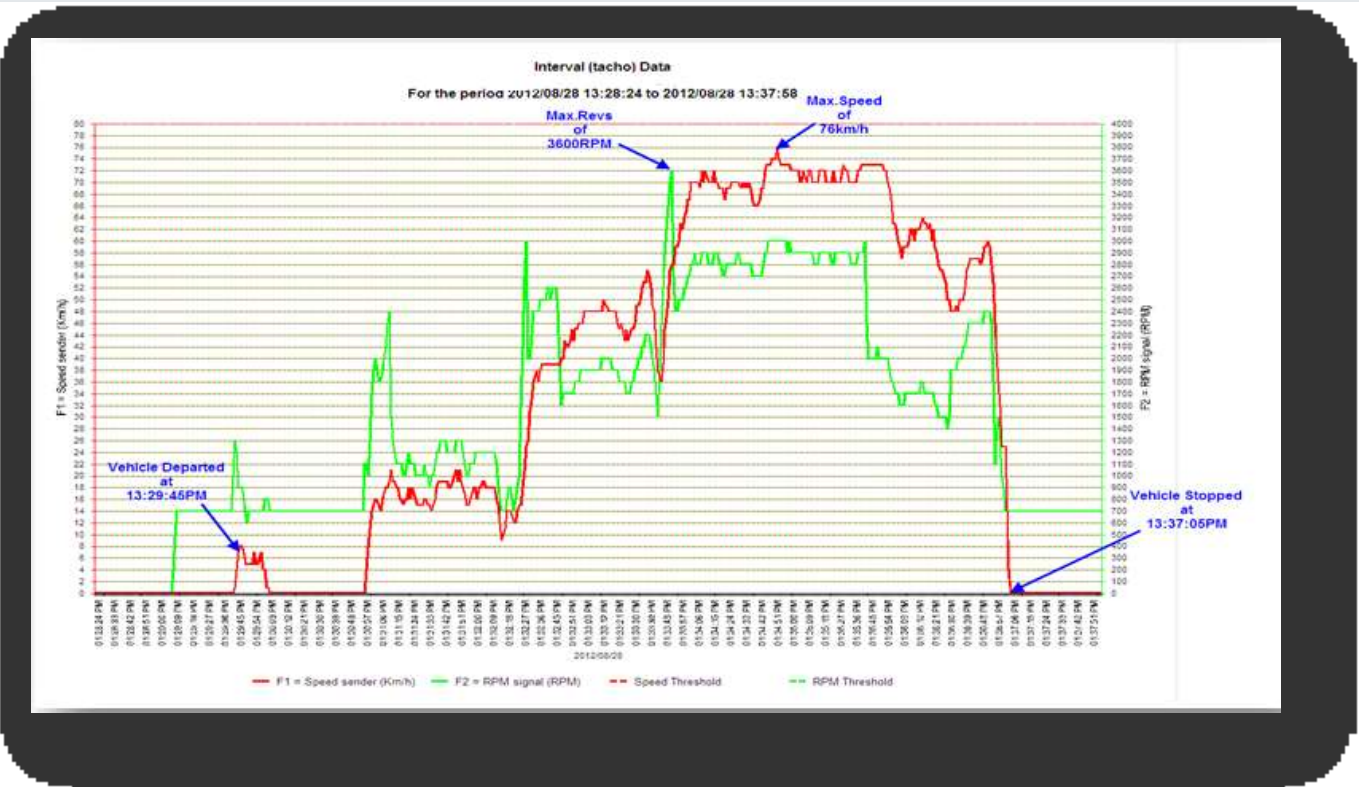


Figure 2 - Summary on Activity Timeline

- 13:29:07 Trip start. Driver 567357 - Nottingham Rd Tsc - Service Tag 2.
- 13:29:45 Seatbelt not in use start. Odometer reading 69472.9 Km.
- 13:29:45 End of standing, duration 00:00:38.
- 13:29:45 The vehicle departed.
- Standing 01:43:47 (93.40%). Trip distance 4.9 Km, with ending Odometer 69477.9 Km.
- Maximum speed 76.0 Km/h. Average speed 40.5 Km/h. No Over speeding.
- Maximum engine revs 3600. RPM. No Over revving. Maximum deceleration 11.0 Km/h/s.
- Maximum acceleration 6.0 Km/h/s.
- Idle 00:04:10 (3.75% of Duration). No Idle - excessive. Out of green band driving 19.32% of Duration.

Figure 3 – Tacho Data on trip (speed and revs)



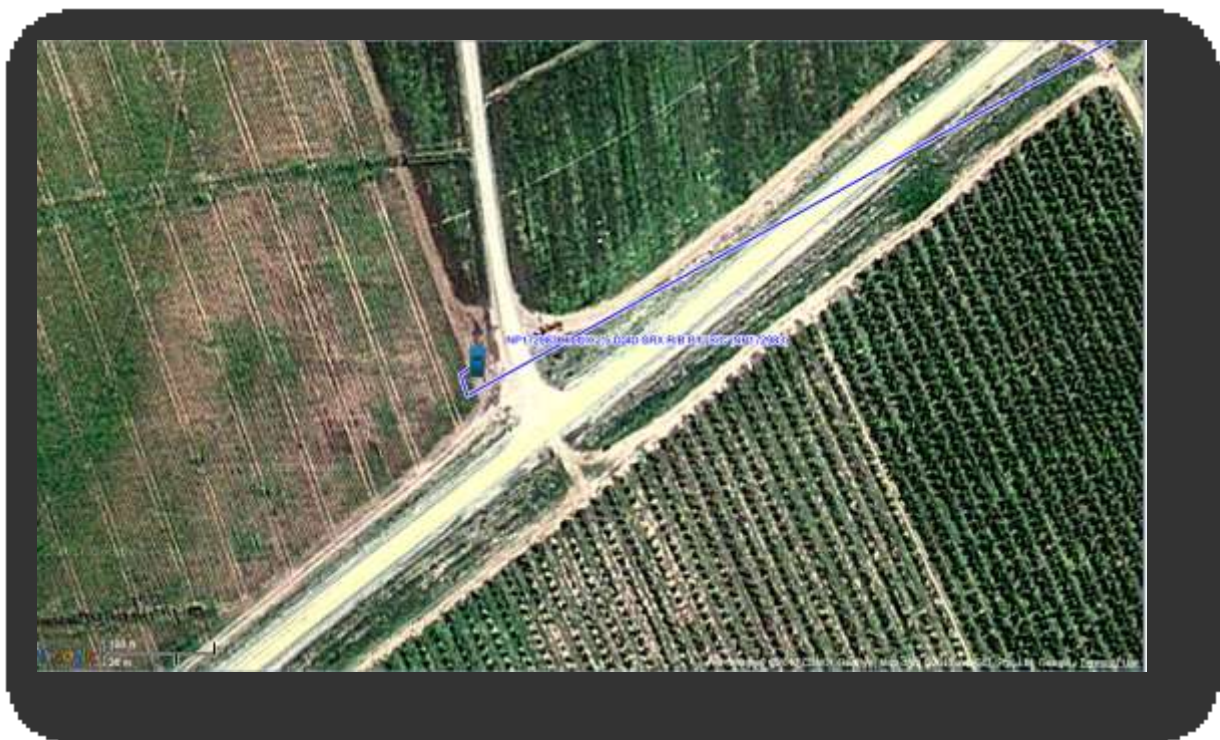
As seen from **figure 3** above, the vehicle departed at 13:29:45PM. The vehicle recorded a maximum speed of 76km/h, maximum revs of 3600RPM and recorded a trip distance of 4.9 km. The vehicle became stationary at 13:37:05PM.

Figure 4 – Tacho Data on trip (speed, revs and brakes)



The tacho report as seen in **figure 4** above shows the vehicle was driving at a speed of 56km/h at 13:36:49PM. The vehicle continued driving until the brakes were applied at 13:36:55PM. The vehicle speed decreases from 56km/h at 13:36:55PM to 25km/h at 13:37:01PM. The brakes were released at 13:37:01PM for 3 seconds. The speed was constant at 25km/h for 2 seconds then dropped to 14km/h at 13:37:04PM. The brakes were applied again at 13:37:05PM. The vehicle became 0km/h (stationary) at 13:37:06PM.

Figure 5 – Google Maps



The map above, **Figure 5**, shows the vehicles last position at time of incident.

Although all reasonable care has been taken to ensure that the above information relating to this incident is accurate, no warranties or undertakings of any kind express or implied, with regard to the accuracy or completeness of any such information is provided.